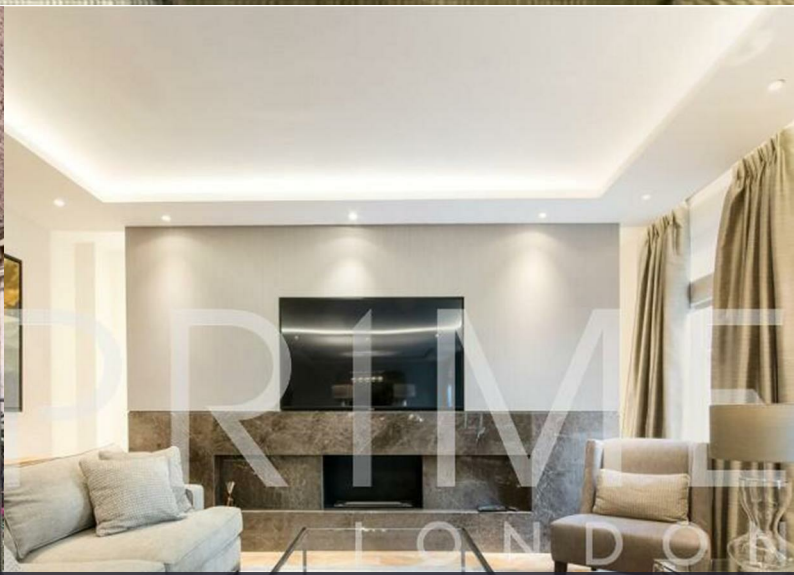




46 Upper Grosvenor Street

Mayfair, London, W1K 2NW

£3,850 Per Week





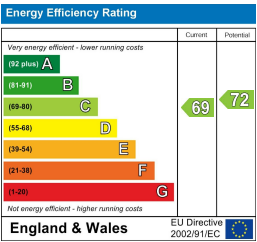
Floor Plan



Area Map



Energy Efficiency Graph



Viewing

By appointment. Contact us on 0207 052 1075 if you wish to arrange a viewing appointment for this property, or require further information.

- Three bedroom duplex ■ 1,803 sq ft (167.53 sqm) apartment
- Separate kitchen with high ■ Communal garden area end specification
- Located in the heart of ■ 24 hour porter Mayfair



This luxurious three bedroom apartment, located in a highly sought-after apartment building and situated just moments from the iconic Grosvenor Square, is available for lease through Prime London.

Totalling 1,803 sq ft (167.53 sqm), this property features an inviting reception room, adorned with five large windows flooding the space with natural light. Additionally, the space includes a designated dining area, perfect for both formal and casual gatherings. There is a separate, spacious eat-in kitchen offering a functional yet stylish space.

There are three well-proportioned double bedrooms, each offering ample space and storage. Two of the bedrooms benefit from luxurious en-suite bathrooms, while a third, additional shower room and a guest cloakroom provide convenience for family and visitors.

Residents of this apartment enjoy access to a peaceful communal garden, 24-hour porter service and a passenger lift.

Upper Grosvenor Street is perfectly positioned within walking distance of the refined boutiques and restaurants of Mount Street, placing you at the heart of Mayfair.



These particulars, whilst believed to be accurate are set out as a general outline only for guidance and do not constitute any part of an offer or contract. Intending purchasers should not rely on them as statements of representation of fact, but must satisfy themselves by inspection or otherwise as to their accuracy. No person in this firms employment has the authority to make or give any representation or warranty in respect of the property.